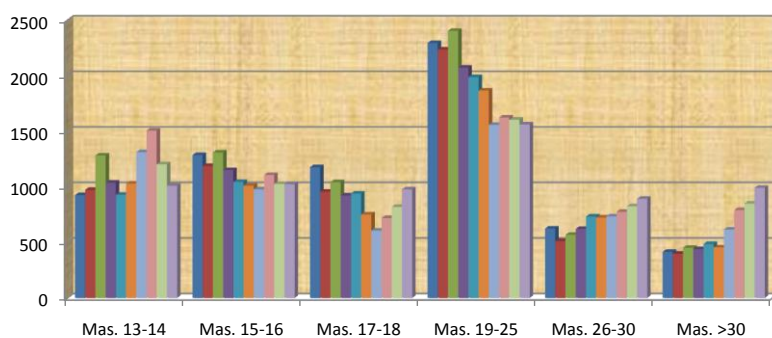


TESSERATI DEL LAZIO

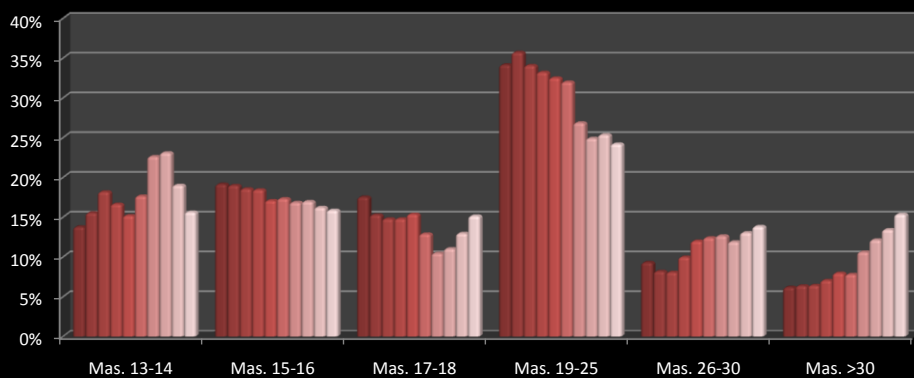
VARIAZIONI PER FASCE DI ETA' IN VALORE ASSOLUTO E PERCENTUALE DAL 1992 AL 2010

settore maschile

LAZIO	Mas. 13-14	Mas. 15-16	Mas. 17-18	Mas. 19-25	Mas. 26-30	Mas. >30	Maschi
1992	926	1287	1178	2296	625	415	6727
1994	973	1189	957	2237	512	398	6266
1996	1283	1310	1043	2405	569	452	7062
1998	1038	1151	923	2074	622	439	6247
2000	929	1045	940	1989	733	486	6122
2002	1030	1011	752	1867	724	455	5839
2004	1313	978	607	1559	734	616	5807
2006	1507	1107	720	1625	776	792	6527
2008	1203	1027	820	1605	826	850	6331
2010	1010	1025	978	1563	893	992	6461

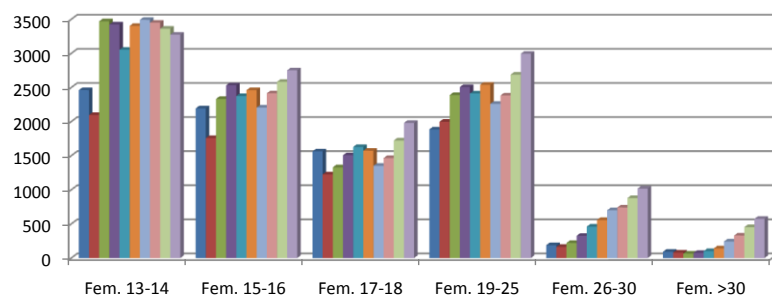


LAZIO	Mas. 13-14	Mas. 15-16	Mas. 17-18	Mas. 19-25	Mas. 26-30	Mas. >30
1992	14%	19%	18%	34%	9%	6%
1994	16%	19%	15%	36%	8%	6%
1996	18%	19%	15%	34%	8%	6%
1998	17%	18%	15%	33%	10%	7%
2000	15%	17%	15%	32%	12%	8%
2002	18%	17%	13%	32%	12%	8%
2004	23%	17%	10%	27%	13%	11%
2006	23%	17%	11%	25%	12%	12%
2008	19%	16%	13%	25%	13%	13%
2010	16%	16%	15%	24%	14%	15%



settore femminile

LAZIO	Fem. 13-14	Fem. 15-16	Fem. 17-18	Fem. 19-25	Fem. 26-30	Fem. >30	Femmine
1992	2462	2194	1564	1886	188	92	8386
1994	2097	1759	1226	1998	163	79	7322
1996	3471	2333	1330	2389	221	65	9809
1998	3424	2532	1507	2507	326	76	10372
2000	3054	2375	1628	2413	461	101	10032
2002	3403	2461	1573	2540	557	141	10675
2004	3492	2206	1352	2261	700	242	10253
2006	3450	2415	1466	2383	741	330	10785
2008	3363	2584	1724	2689	879,5	452,5	11690
2010	3275	2752	1981	2995	1018	575	12596



LAZIO	Fem. 13-14	Fem. 15-16	Fem. 17-18	Fem. 19-25	Fem. 26-30	Fem. >30
1992	29%	26%	19%	22%	2%	1%
1994	29%	24%	17%	27%	2%	1%
1996	35%	24%	14%	24%	2%	1%
1998	33%	24%	15%	24%	3%	1%
2000	30%	24%	16%	24%	5%	1%
2002	32%	23%	15%	24%	5%	1%
2004	34%	22%	13%	22%	7%	2%
2006	32%	22%	14%	22%	7%	3%
2008	29%	22%	15%	23%	8%	4%
2010	26%	22%	16%	24%	8%	5%

